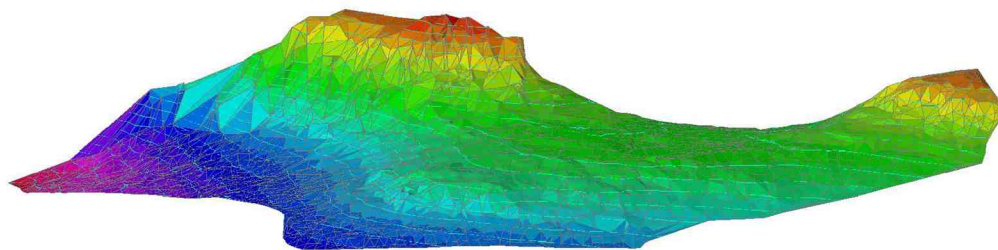


# Sixth season of archaeological investigations at Tornambè (Pietraperzia - ITALY)



## Organization

**participation restricted to a maximum of 15 participants per session**

*everyone taking part in a session will receive a certificate of participation*

**Session I: 01/09/2014 - 14/09/2014**

**Session II: 15/09/2014 - 28/09/2014**

**Session III: 29/09/2014 - 12/10/2014**

Registration deadline: 15 August 2014

## Participation fee:

**€ 400,00 per session**

The fee *includes*: participation to scheduled activities, educational materials, meals, accomodation, accident and medical insurance, local transport.

It does *not include*: travel costs, personal equipment, optional activities.

## Payment

Payment of the appropriate fee is must be made within two (2) weeks from the start of the chosen session, or participation will not be possible. Payment can be made by international bank transfer (IBAN: IT 27 0 08985 83450 000000011875), with the reference: Participation fee Case Bastione 2014, clearly indicating the chosen session. Beneficiary: Arkeos s.c.; SWIFT code: ICRA ITRRRD0 (last character is zero).

*In case of late cancellation, fees paid will be refunded minus 50%.*

## The site of Tornambè

Tornambè is located on the top of a steep ridge placed within the valley of the Southern Imera river. It was occupied form the final Neolithic (4th mill. BC) the Greek Archaic period (7th-5th cent. BC). In the previous campaigns we have explored some large huts (with diameter of 8-10 m) belonging to a village dating to the Late Copper Age (2700-2300 BC), containing a rich repertoire of slipped and painted wares, as well as various tombs cut into the rocky ridge.

## Educational and scientific activities

### On the site

Stratigraphic excavations of prehistoric deposits, survey, planning, use of a range of archaeological tools, including 3D laser scanning.

### In the lab

Cataloguing and graphic and photographic documentation of finds, information management (database, GIS, digitization of site plans, etc.).

### Optional activities

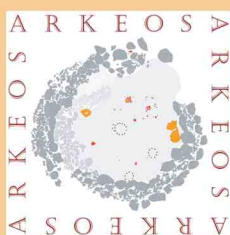
Participants will attend a series of lectures given by leading archaeologists and experts on issues related to the methodological and practical aspects of the archaeology of Sicily. Visits to major museums and archaeological sites in the province of Enna and Sicily can be also arranged on request for the weekend.



Regione Sicilia  
Assessorato Regionale BB.CC.AA. e I.S.  
Servizio Soprintendenza BB.CC.AA. di Enna



Comune di Pietraperzia



Arkeos - Servizi integrati  
per i Beni Culturali s.c.

**For further information and to register, please contact:**

**Secretary:** c/o Arkeos s.c., [www.arkeos.eu](http://www.arkeos.eu) - [arkeos@hotmail.com](mailto:arkeos@hotmail.com)

**Mob:** +39 333-3643403 - **Fax:** +39 (0)935-32697